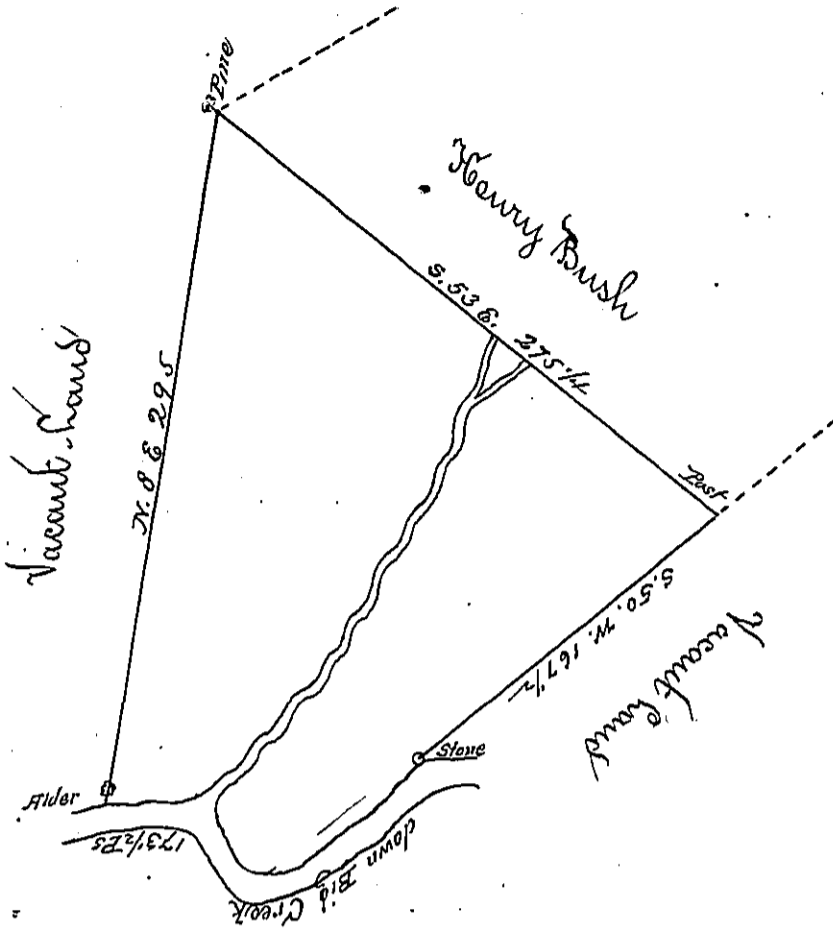


- Bearing and Dist<sup>s</sup>  
down Big Creek
1. S 40 W. 20
  2. S 50 W. 50
  3. S 80 W. 22
  4. S 62 1/2 W. 35
  5. West. 46 1/2



By Virtue of a Warrant dated the 1<sup>st</sup> July 1784 Surveyed the 3<sup>rd</sup> June 1785 to James Ash the above described tract of Land situate on Big Creek and including the mouth of Wild Creek in Northampton County Containing two hundred and fifty eight Acres or half and the Allowance of Six p Cent &c.

To John Lukens Esquire }  
Surveyor General }

R. Geo Palmer  
Jee

IN TESTIMONY that the above is a copy of the original remaining on file in the Department of Internal Affairs of Pennsylvania, made conformably to an Act of Assembly approved the 16th day of February, 1833, I have hereunto set my Hand and caused the Seal of said Department to be affixed at Harrisburg, this first day of April 1902.

James W. Fatta  
Secretary of Internal Affairs.